

# Desk PDM Charger

INSTALLATION AND OPERATION MANUAL



## NOTICE

The information contained in this document is believed to be accurate in all respects but is not warranted by Mitel Networks™ Corporation (MITEL®). Mitel makes no warranty of any kind with regards to this material, including, but not limited to, the implied warranties of merchantability and fitness for a particular purpose. The information is subject to change without notice and should not be construed in any way as a commitment by Mitel or any of its affiliates or subsidiaries. Mitel and its affiliates and subsidiaries assume no responsibility for any errors or omissions in this document. Revisions of this document or new editions of it may be issued to incorporate such changes.

No part of this document can be reproduced or transmitted in any form or by any means - electronic or mechanical - for any purpose without written permission from Mitel Networks Corporation.

## TRADEMARK

The trademarks, service marks, logos and graphics (collectively "Trademarks") appearing on Mitel's Internet sites or in its publications are registered and unregistered trademarks of Mitel Networks Corporation (MNC) or its subsidiaries (collectively "Mitel") or others. Use of the Trademarks is prohibited without the express consent from Mitel. Please contact our legal department at [legal@mitel.com](mailto:legal@mitel.com) for additional information. For a list of the worldwide Mitel Networks Corporation registered trademarks, please refer to the website: <http://www.mitel.com/trademarks>.

© Copyright 2017, Mitel Networks Corporation  
All rights reserved

## Contents

<b>1 Introduction</b>	<b>2</b>
1.1 Abbreviations and Glossary	3
1.2 Safety	3
1.3 Technical Solution	3
1.4 Requirements	4
<b>2 Installation and Configuration</b>	<b>4</b>
2.1 Desk PDM Charger Installation	4
2.1.1 Software installation	5
2.2 Desk PDM Charger Configuration	5
2.3 Security	6
<b>3 Commissioning</b>	<b>6</b>
<b>4 Maintenance</b>	<b>7</b>
4.1 Operation when charger is connected to WinPDM/CPDM3	7
4.2 Software Update	8
4.3 Easy Replacement	8
4.4 LED indications	8
<b>5 Operation</b>	<b>9</b>
5.1 Charger operation	9
5.1.1 Operation when charger is connected to power supply	9
<b>6 Troubleshooting</b>	<b>9</b>
<b>7 Related Documents</b>	<b>10</b>

# 1 INTRODUCTION

This document describes how to install, configure and operate the Desk PDM charger. The Desk PDM Charger is an advanced charger equipped with a USB port, making it possible to connect it directly to a PC for the purpose of upgrading or configuring the Desk PDM Charger itself or a handset placed in the charger. The Desk PDM Charger also has two Ethernet ports, enabling upgrading and configuring over a LAN of a portable placed in the charger.

The USB port is used when the Desk PDM Charger is connected to a PC running the Portable Device Manager (WinPDM), Windows Version. The WinPDM or the CPDM3 can be used to upgrade the software and to configure parameters in the Desk PDM Charger as well as in a handset placed in the Desk PDM Charger.

The Desk PDM Charger supports easy replacement, that is replacement of a faulty handset via the handset display and does not involve WinPDM or CPDM3.

**Note:** There are different Desk PDM Charger available:

- Art. No: Desk PDM Charger-BML 35106X/X; advanced desktop charger for DT390/DT69x telephones (Although not originally designed for the Mitel 5613 and 5614, this PDM Charger is compatible for programming these two phone models).
- Art. No: Desk PDM Charger-87L0000XAAA; advanced desktop charger for DT4x3 telephones.

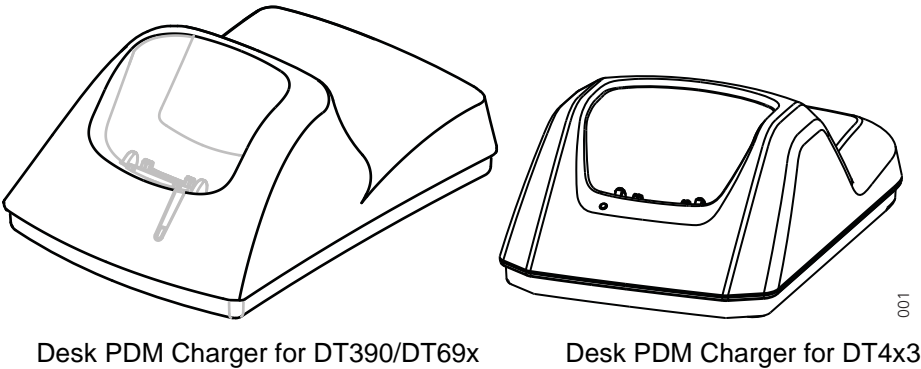


Figure 1. Desk PDM Chargers.

The Ethernet ports makes it possible to connect several Desk PDM Charger's to the same LAN.

This document is intended as a guide for installation, maintenance, operation and troubleshooting purposes.

	DESK PDM CHARGER	DESKTOP CHARGER ADAPTER
Supply voltage	5 V DC	100 - 240 V AC, (50-60Hz)
Max current consumption when charging	2.0 A	0.4 A

## 1.1 ABBREVIATIONS AND GLOSSARY

device	In this document, a device can be Desk PDM charger or a handset developed to work together with Desk PDM Charger and WinPDM/CPDM3. See respective manual for each device.
DHCP	Dynamic Host Configuration Protocol, protocol for automating the configuration of computers that use TCP/IP
Easy replacement	A handset replacement procedure that is done via the handset display and does not involve the WinPDM/CPDM3.
WinPDM	Windows Portable Device Manager
USB	Universal Serial Bus
CPDM3	Centralized Portable Device Manager: A system version with more features than the WinPDM. It runs on a ELISE3 hardware and is manageable from a pc with network communication.

## 1.2 SAFETY

The desktop charger adapter shall be connected to 100 - 240 V AC, 50 - 60 Hz. Therefore extra caution shall be taken during operation. The Desktop Charger itself is supplied with 5 V DC from the adapter.

**IMPORTANT:** Use only the power supply adapter delivered with the charger. Replacing with other power supply units means risk of battery explosion caused by too high input voltage or switched polarity. Supplying the charger with 5 V on opposite poles than intended is strongly forbidden.

## 1.3 TECHNICAL SOLUTION

The following functionality is provided by the Desk PDM Charger:

- Provide a means for software and parameter update of handsets and chargers.
- Charging of the battery of the handset.
- Easy replacement

The Desk PDM Charger has one USB connection and two Ethernet connections. When using Ethernet connection it is possible to connect several Desk PDM Chargers serially to the LAN.

If the Desk PDM Charger is connected towards WinPDM via both USB and Ethernet, the USB connection overrides the Ethernet connection.

If the Ethernet connection is used, each Desk PDM Charger needs an IP address.

See label for MAC address.

## 1.4 REQUIREMENTS

Computer:

- USB port. USB 1.1 required, USB 2.0 supported.
- Ethernet port 10/100 Mbit/s.
- Microsoft Windows XP (see documentation for Win PDM for supported OS versions).

# 2 INSTALLATION AND CONFIGURATION

## 2.1 DESK PDM CHARGER INSTALLATION

The chargers shall be placed in a dry environment with a temperature range from 5° C up to + 40° C.

**Delivery includes:**

- Desk PDM Charger
- Power Supply Cable (AC cord with corresponding wall plug)
- Power Supply adapter including DC cable
- USB cable

No tools are required.

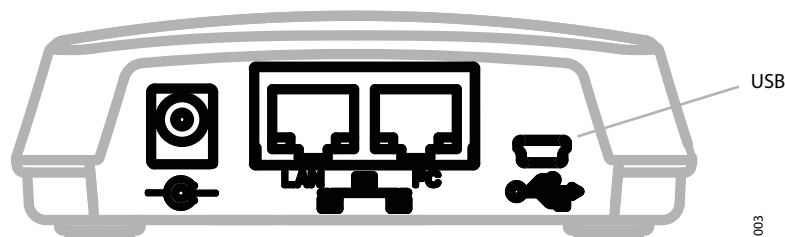


Figure 2. Desk PDM Charger connections.

From left: DC power, Ethernet LAN, Ethernet PC and USB.

- 1 Connect the AC power supply cord to the adapter.
- 2 Connect the power supply cord to the wall socket.
- 3 Connect the DC cable to the charger. The charger LED indicates the status of the charger. See table in chapter 5, page 11.
- 4 Connect the Desk PDM Charger to the pc with a USB or Ethernet cable.

One of the Ethernet connections is used for communication with a PC and the other can be used for LAN connection. Power over Ethernet is not supported.

The USB Interface supports USB 2.0 Full speed. One Mini-B Receptacle USB connector is used. The USB connection is used for communication with a PC. Power over USB is not supported.

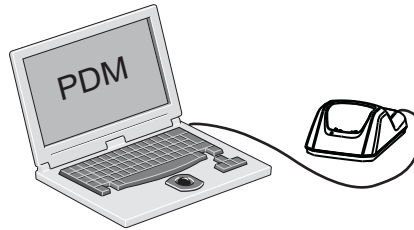


Figure 3. Connection to WinPDM (Windows Version)

### 2.1.1 SOFTWARE INSTALLATION

The charger is delivered with pre-installed software and it is possible to upgrade the charger software. See Installation and Operation Manual for WinPDM, or Installation and Operation Manual for CPDM3 for instructions on how to upgrade the charger.

## 2.2 DESK PDM CHARGER CONFIGURATION

Each Desk PDM Charger need access to DHCP to receive an IP address automatically. If no DHCP is accessible it is possible to configure the IP address with WinPDM (Windows Version).

If the Desk PDM Charger is configured to run DHCP, connect the network cable and the charger will automatically receive an IP address. If the charger is not configured to run DHCP the charger will use the setup IP addresses.

The following parameters exist for Desk PDM Charger and can be changed via WinPDM/CPDM3:

Parameter	Description
Ethernet Bit rate <sup>1</sup>	auto (default)
Ethernet connector <sup>1</sup>	auto (default)
Ethernet duplex <sup>1</sup>	auto (default)
DHCP Enabled	Yes (default), No
Charger IP address	192.168.0.101 (default)
Subnet mask	255.255.255.0 (default)
Default gateway IP address	192.168.0.1 (default)
DNS IP address	192.168.0.2 (default)
Charger IP port	12346 (default)
Service Discovery Enabled	Yes (default), No
Service Discovery Domain	Name of domain
DH IP address (one DH only)	192.168.0.3 (default)
DH IP port	10147 (default)

1. Currently only "auto" setting is available.

Follow this instruction to set Desk PDM Charger parameters:

**Note:** It may be necessary to import the parameter definitions file that is included in the software package. The package is provided by your supplier.

- 1 Check that the Desk PDM Charger is connected to WinPDM/CPDM3.
- 2 In WinPDM or in the Device manager in CPDM3, click on the Numbers tab.
- 3 Select the Desk PDM Charger device that you want to change parameters for.
- 4 In the Number menu, click "Edit...".
- 5 Edit the parameters you want to edit.
- 6 Click "OK".

## 2.3 SECURITY

(information regarding software security)

N/A

# 3 COMMISSIONING

Follow these instructions to verify that the charging works.

- 1 Connect the charger according to chapter [2.1 Desk PDM Charger Installation](#) on page 6.
- 2 Place a handset in the charging slot to start charging. The handset indicates the charging progress, see respective manual for details.

See [figure 2](#) on page 6 to see the connections to the charger.

Follow these instructions to start WinPDM/CPDM3.

In the case of WinPDM:

- 1 Check that the charger is connected to your pc via USB.
- 2 Start WinPDM.
- 3 Go to the "Devices" tab or the Numbers tab and verify that the Desk PDM Charger is online.



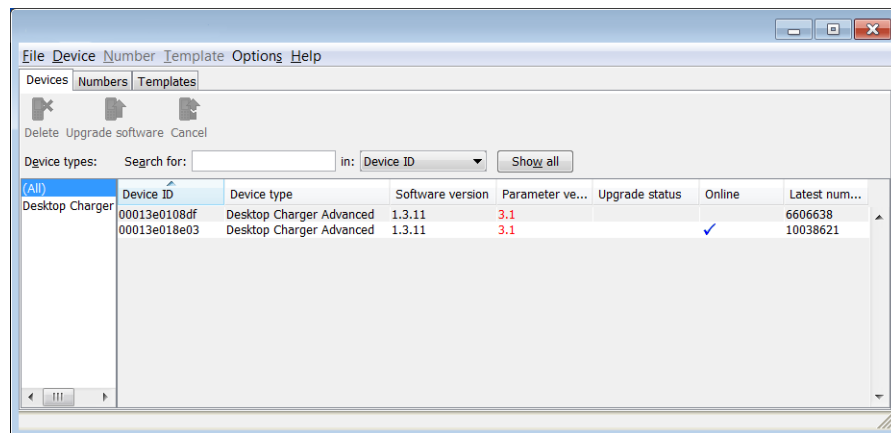


Figure 4. A Desk Charger in the Numbers tab in the WinPDM.

In the case of CPDM3:

- 1 Check that the charger is connected to the LAN.
- 2 Open a web browser and enter the URL to access the CPDM3.
- 3 Click on Device Manager. The Device Manager window appears.
- 4 Go to the "Devices" tab and verify that the Desk PDM Charger is online (it may take up to 15 s).

For instructions on how to verify that the charger parameter setting works, and for further instructions, please see Installation and Operation Manual for WinPDM, or Installation and Operation Manual for CPDM3.

## 4 MAINTENANCE

### 4.1 OPERATION WHEN CHARGER IS CONNECTED TO WINPDM/CPDM3

When the charger is connected to a WinPDM/CPDM3, the following additional operations can be done:

- Software upgrade (of charger or handset)
- Parameter editing (of charger or handset)
- Phonebook upload (handset)
- Language upload (handset)

See Installation and Operation Manual for WinPDM, or Installation and Operation Manual for CPDM3 for details.

## 4.2 SOFTWARE UPDATE

The charger software is pre-installed. Updates can be performed by using the WinPDM or CPDM3 application.

The software version of the charger can be checked as follows:

- 1 Open WinPDM or the Device Manager in CPDM3.
- 2 Go to the Devices tab.
- 3 In the list of devices, find the charger.
- 4 The software version is shown in the Software version column.

See Installation and Operation Manual for WinPDM, or Installation and Operation Manual for CPDM3 for details.

## 4.3 EASY REPLACEMENT

The Desk PDM Charger supports the Easy Replacement feature. Easy replacement is performed via the handset display and does not involve WinPDM or CPDM3. The Desk PDM Charger only needs a power connection to support easy replacement. A connection to WinPDM/CPDM3 is not needed. See the User Manual for your handset for details.

## 4.4 LED INDICATIONS

Desk PDM Charger is equipped with a status LED. The following indications are used:

LED INDICATION	DESCRIPTION
None	Not connected to power.
Green, fixed	Logged on to WinPDM/CPDM3.
Orange, fixed	Not logged on to WinPDM/CPDM3.
Orange, flashing (1000 ms on, 1000 ms off)	1) Software download. 2) File transfer during Easy Replacement.
Orange, flashing (100 ms on, 800 ms off)	"Change phone" indication during Easy Replacement.
Red, fixed	Software error. Service needed.
Red, flashing (100 ms on, 800 ms off)	Error indication during Easy Replacement. Put back new portable in charger. Charger returns to "Not logged in to WinPDM/CPDM3" mode when portable is removed.
Red, flashing (3 long flashes, 800 ms on, 100 ms off)	Parameter error in user parameters. Charger performs a factory reset and restarts.
Red, flashing (800 ms on, 100 ms off)	1) Parameter error in production parameters. Service needed for charger. 2) Error during Easy Replacement. Service needed for both handsets.

LED indications are also described in chapter 6 [Troubleshooting](#) on page 11.

## 5 OPERATION

### 5.1 CHARGER OPERATION

#### 5.1.1 OPERATION WHEN CHARGER IS CONNECTED TO POWER SUPPLY

When the charger is connected to external power supply, the following normal operation can be done:

##### **Handset charging**

- 1 Connect the charger to the AC power supply.
- 2 Place a handset in the charging slot to start charging.

##### **Handset disconnection**

- 1 First, tilt the handset forwards.
- 2 Then, lift the handset upwards.

**Note:** Do not try to lift the handset upwards before tilting it forwards.

## 6 TROUBLESHOOTING

For general LED indications, see also [5 Operation](#) on page 11.

##### **Status LED on the charger is not lit.**

Check that power is supplied.

If power is supplied and the status LED is still not lit:

The probable cause is a software error. Send charger for service.

##### **Status LED on the charger is fixed red.**

Software error. Send charger for service.

Status LED is flashing red for 3s, then green

Software error. A factory reset has been performed. It may be necessary to set parameters from WinPDM/CPDM3.

##### **Status LED is flashing red (100 ms on, 800 ms off) for more than 3s**

An error occurred during Easy Replacement. Remove handset from charger.

##### **Status LED is flashing red (800 ms on, 100 ms off) for more than 3s**

If the error occurred during Easy Replacement, remove the handset from the charger. The charger should return to normal operation.

Software error in charger. Send charger for service.

**Charging does not start**

Check that the handset is properly inserted in the charger.

**Desk PDM Charger does not appear in WinPDM/CPDM3**

Check that the communication cable (USB or Ethernet) is connected.

**Easy replacement does not start.**

Check that the handset are of the same device type.

Check the handset software version. See the corresponding Configuration Manual for the handset.

Check that the Desk PDM software version is 1.3.x or greater, see [4.2 Software Update](#) on page 10

## 7 RELATED DOCUMENTS

Installation and Operation Manual Portable Device Manager (PDM), Windows version	12/1531-ANF 901 43
Installation and Operation Manual CPDM3	25/1531-ANF 901 43
User Manual, Mitel DT4x3 DECT Cordless Phones	1424-EN/LZT 103 089
User Manual, Mitel DT390 DECT Cordless Phone	1424-EN/LZT 103 087
User Manual, Mitel DT69x DECT Cordless Phones	1424-EN/LZT 103 088